

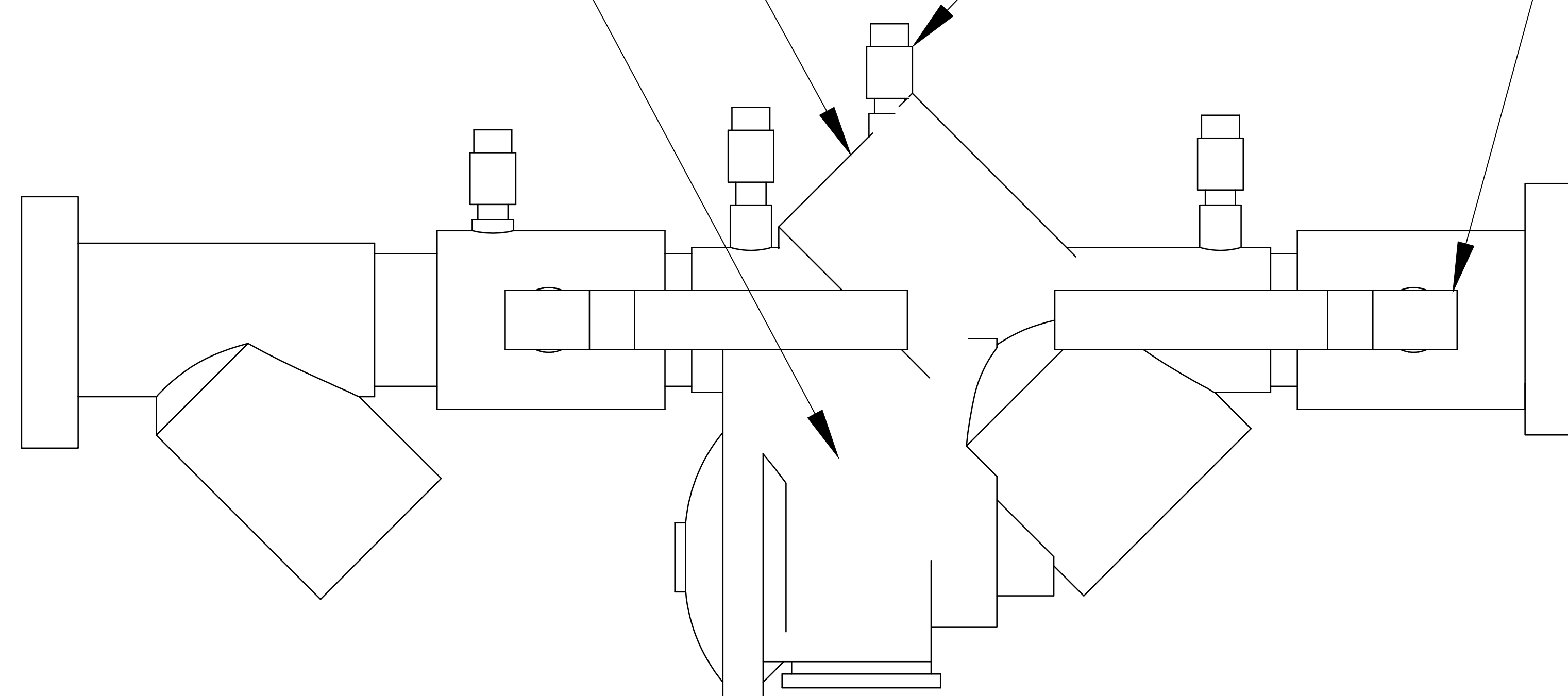


BACKFLOW ASSEMBLY

WATTS LF909 2" AND ABOVE (LEAD FREE) OR EQUAL

TEST CORKS

SHUT OFF VALVE (TYP.)



NOTES:

1. INSTALLER MUST COMPLETE THE MOST UP TO DATE APPLICATION FORM FOR THE PHYSICAL CONNECTION PERMIT FROM NJDEP. THE FORM MUST BE COMPLETED BY THE BUILDING OWNER / DEVELOPER BEFORE INSTALLATION OF THE BACKFLOW PREVENTER.
2. FOR INSTALLATIONS LESS THAN 3"
3. EQUIPMENT TO BE INSTALLED AT A MINIMUM OF 24" FROM ANY STRUCTURES OR HARDSCAPING
4. COVER BACKFLOW ASSEMBLY WITH HOT BOX ENCLOSURE TO PREVENT FREEZE DAMAGE
5. WHEN UNIT IS NEXT TO A STRUCTURE MOUNT TEST CORKS ON OPEN OR NON STRUCTURE SIDE
6. ALL FITTINGS SHALL COMPLY WITH NEW JERSEY STATE REQUIREMENTS, AWWA STANDARDS, AND HEALTH AND SAFETY CODE (NO LEAD BRASS)