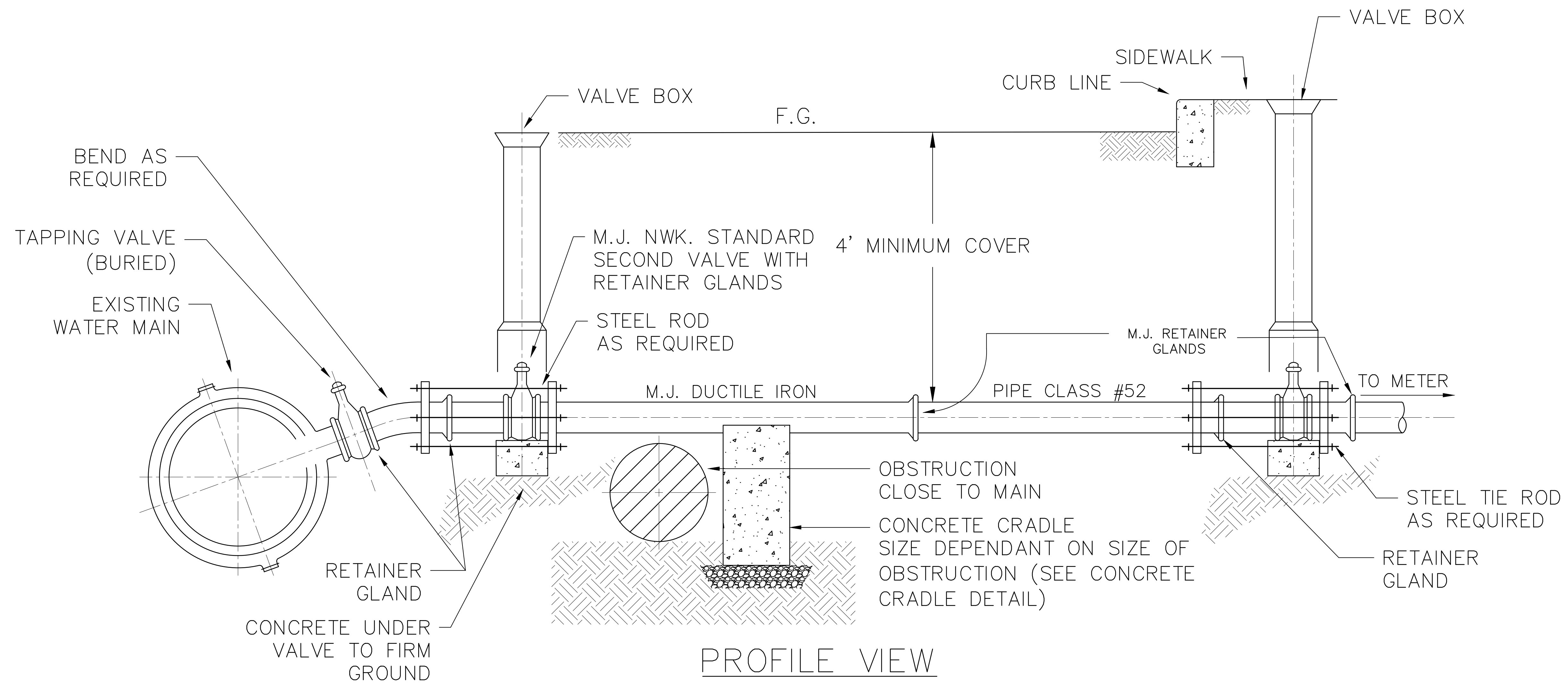
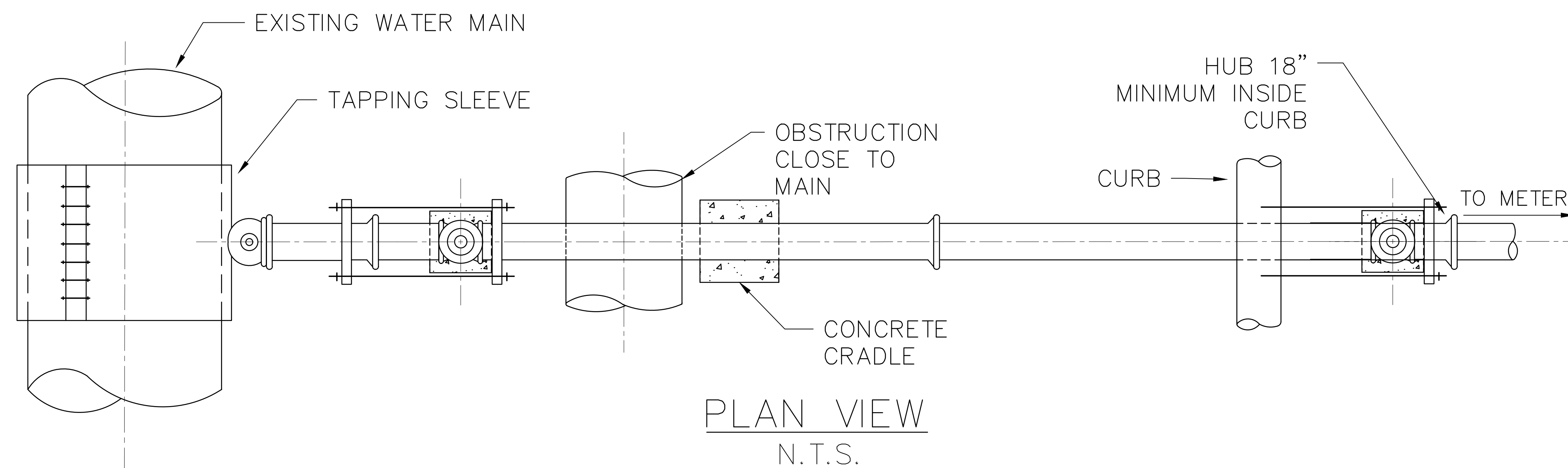


**TYPICAL INSTALLATION 4"-12" SERVICES WITH A CLOSE OBSTRUCTION**



PROFILE VIEW  
N.T.S.



PLAN VIEW  
N.T.S.

NOTES:

1. RETAINER GLANDS TO BE USED ON ALL MECHANICAL JOINTS. ADDITIONAL RESTRAINTS EITHER CONCRETE THRUST BLOCK OR STEEL TIE RODS MAY BE REQUIRED BY THE DIVISION.
2. NOTICE SHALL BE GIVEN TO THE WATER DEPARTMENT PRIOR TO CONSTRUCTION
3. IF EXISTING MAIN IS CAST IRON, SEE TAPPING SLEEVE DETAIL FOR NON DUCTILE IRON PIPES. IF EXISTING MAIN IS DUCTILE IRON, SEE STAINLESS STEEL TAPPING SLEEVE DETAIL FOR DUCTILE IRON PIPES.
4. TYPE OF CONNECTION & MATERIAL FOR WATER MAIN WORK MUST BE APPROVED BY THE CITY OF NEWARK BEFORE ANY WORK IS PERFORMED.