

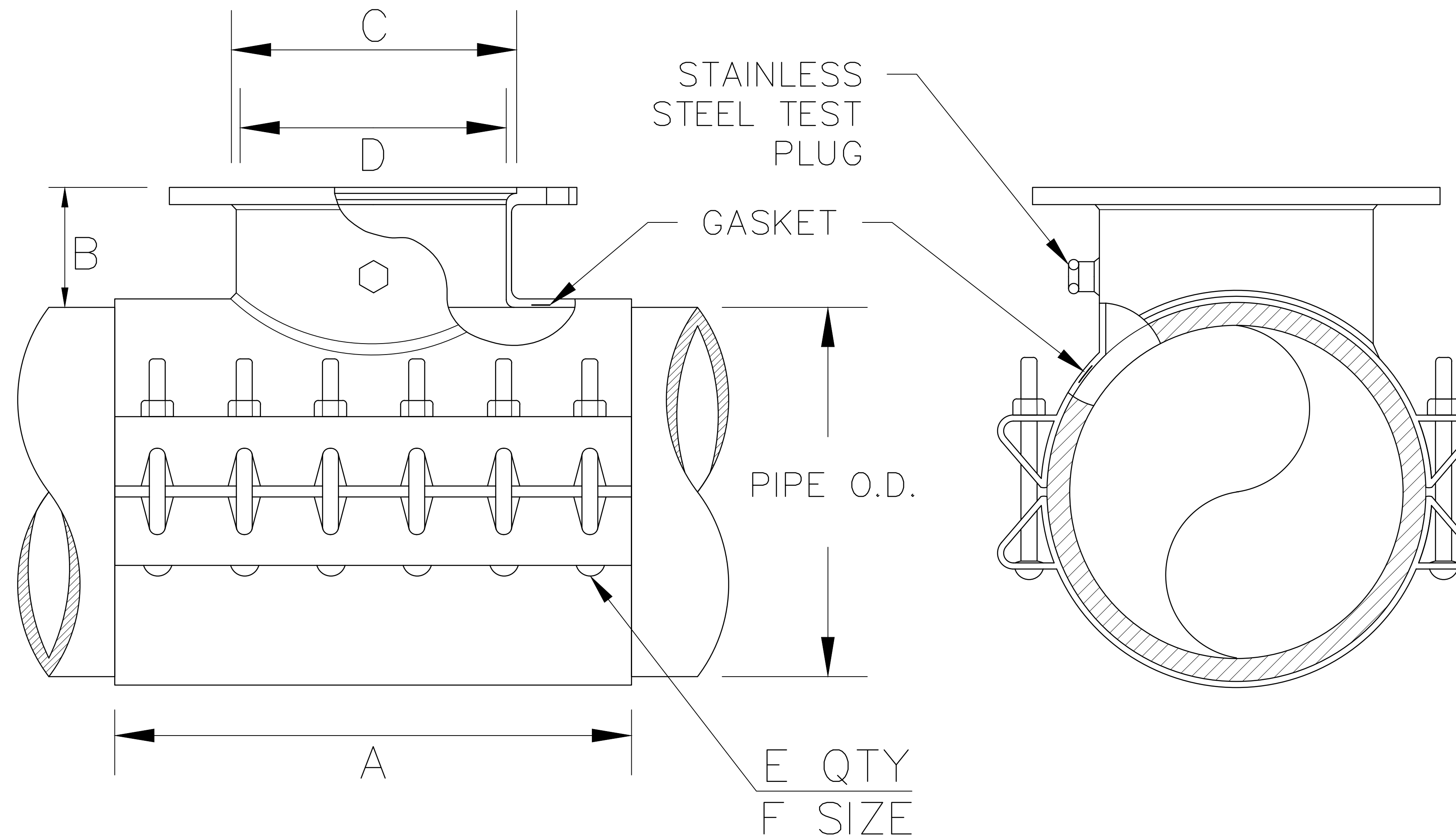
FLANGE SIZE	A	B	C	D	E	F
2	15	4	3 1/32	2.16	10	5/8
3	15	5	4 1/32	3.26	10	5/8
4	15	5	5 1/32	4.26	10	5/8
6	15	5	7 1/32	6.35	10	5/8
8	21	5 1/8	9 1/32	8.32	14	5/8
10	27	5 1/2	11 1/16	10.42	18	5/8
12	30	5 3/4	13 1/16	12.39	20	5/8

APPROVED MANUFACTURERS:

1. JCM
2. FORD
3. POWER-SEAL
4. ROMAC

NOTE:

1. TYPE OF CONNECTION & MATERIAL FOR WATER MAIN WORK MUST BE APPROVED BY THE CITY OF NEWARK BEFORE ANY WORK IS PERFORMED.
2. ALL HARDWARE TO BE 304 STAINLESS STEEL.



CREATED: 2-20-2023

WATER - DETAIL 27

CITY OF NEWARK, NEW JERSEY

**STAINLESS STEEL TAPPING SLEEVE
DETAIL FOR DUCTILE IRON PIPES**

