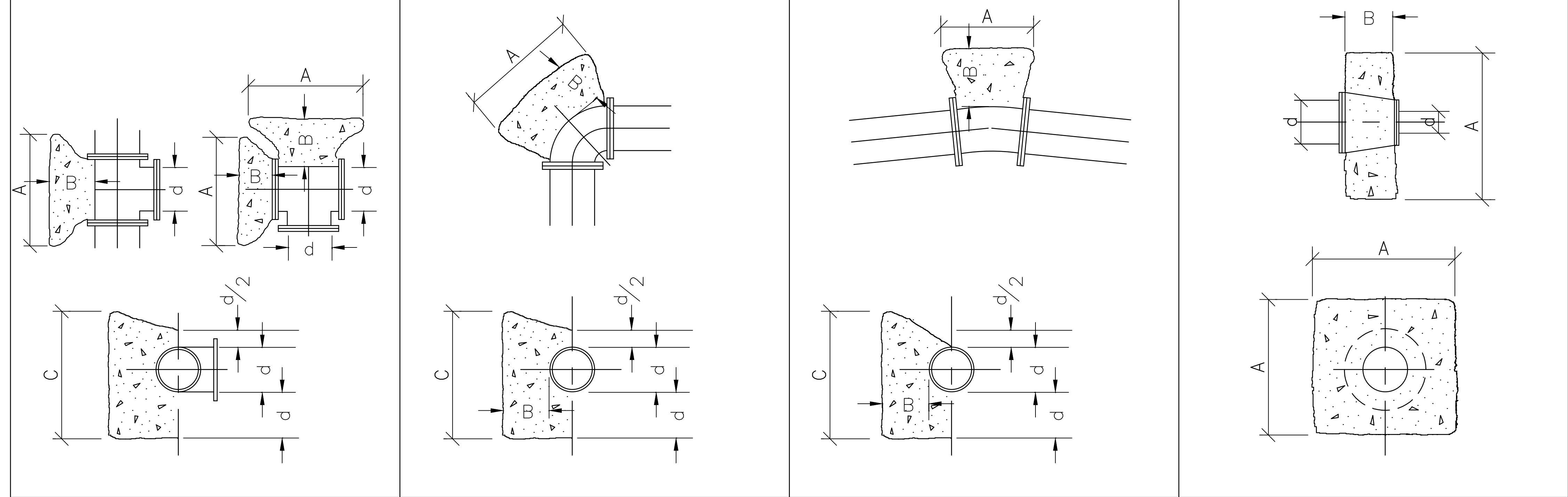


MINIMUM SIZE OF CONCRETE THRUST BLOCKS																										
d	TEES & CROSSES	A	B	C	90° BENDS	A	B	C	45° BENDS	A	B	C	22-1/2° 11-1/4° BENDS	A	B	C	REDUCERS	dxd	A	B						
2" OR LESS		1'-0"	6"	1'-0"		1'-3"	6"	1'-3"		1'-3"	6"	1'-3"		1'-0"	6"	1'-0"										
4"		1'-6"	8"	1'-6"		1'-9"	8"	1'-9"		1'-3"	8"	1'-3"		1'-3"	8"	1'-3"										
6"		2'-0"	8"	1'-9"		2'-6"	8"	2'-0"		1'-6"	8"	1'-3"		1'-6"	8"	1'-3"						6"x4"	1'-6"	1'-0"		
8"		2'-6"	8"	2'-0"		3'-0"	10"	2'-8"		2'-0"	10"	2'-3"		1'-6"	10"	1'-9"						8"x4"	2'-0"	1'-6"		
10"		3'-0"	10"	2'-9"		3'-6"	12"	3'-6"		3'-0"	12"	2'-3"		1'-6"	12"	2'-0"						10"x6"	2'-4"	1'-9"		
12"		3'-6"	10"	3'-9"		4'-6"	12"	3'-9"		3'-6"	12"	2'-6"		1'-6"	12"	3'-0"						10"x8"	2'-6"	2'-0"		
14"		5'-0"	15"	4'-0"		5'-6"	15"	4'-6"		4'-6"	15"	3'-3"		2'-6"	15"	3'-6"										
16"		5'-0"	15"	4'-0"		5'-6"	15"	4'-6"		4'-6"	15"	3'-3"		2'-6"	15"	3'-6"										
18"		5'-0"	15"	4'-6"		5'-6"	15"	5'-6"		5'-3"	15"	3'-3"		2'-6"	15"	3'-6"										
20"		5'-6"	15"	5'-0"		7'-0"	15"	5'-6"		5'-3"	15"	4'-0"		3'-0"	15"	3'-6"						20"x16"	3'-2"	2'-0"		
24"		6'-0"	15"	6'-6"		7'-0"	15"	8'-0"		5'-5"	15"	5'-5"		4'-0"	15"	4'-0"						24"x12"	5'-5"	2'-0"		



1. THRUST BLOCKS TO BE USED FOR WATER MAIN AND FORCE MAINS AT ALL BENDS, TEES, REDUCERS AND PLUGS.
2. BEARING AREAS FOR THRUST BLOCKS ARE BASED ON THE UNDISTURBED SOIL WITH BEARING CAPACITY OF 2000 POUNDS PER SQ. FT. FOR OTHER SOILS OF LESS BEARING CAPACITY, THE AREAS SHALL BE ADJUSTED ACCORDINGLY, (FIG. 14, ASCE "PIPELINE DESIGN FOR WATER AND WASTEWATER, 1975").
3. ALL CONCRETE FOR THRUST BLOCKS SHALL BE 3000 PSI COMPRESSIVE STRENGTH WITHIN 28 DAYS.
4. THE THRUST BLOCKS SHALL BE POURED FROM FITTING SUCH THAT THEY BEAR ON THE UNDISTURBED WALL OF THE TRENCH.
5. THE TABULATED CONTACT BEARING AREAS LISTED ARE FOR HORIZONTAL AND DOWNWARD THRUST ONLY AND ARE NOT APPLICABLE FOR UPWARD THRUST.

THRUST BLOCK DETAIL FOR SYSTEMS AT 150 PSI TEST PRESSURE OR LESS

N.T.S.

CREATED: 2-20-2023

WATER - DETAIL 19

CITY OF NEWARK, NEW JERSEY
**THRUST BLOCK DETAIL FOR SYSTEMS AT
 150 PSI OR LESS**

